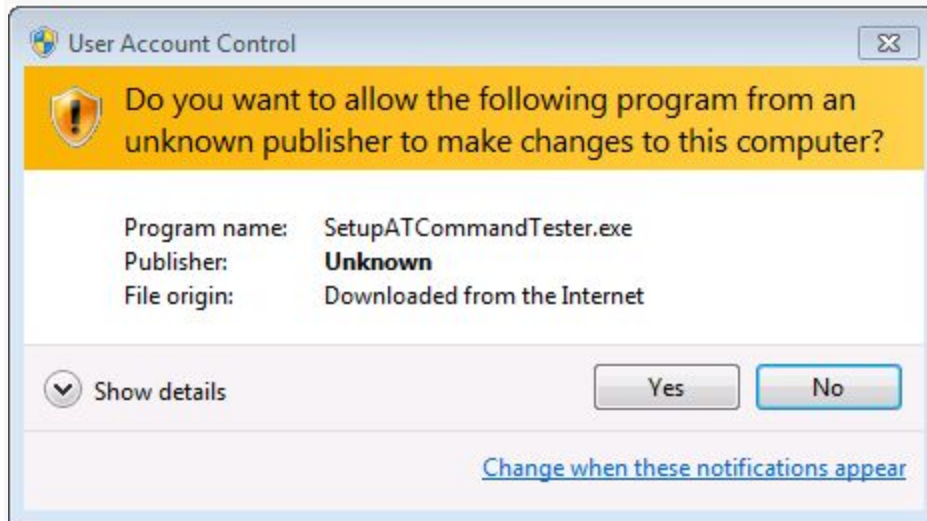


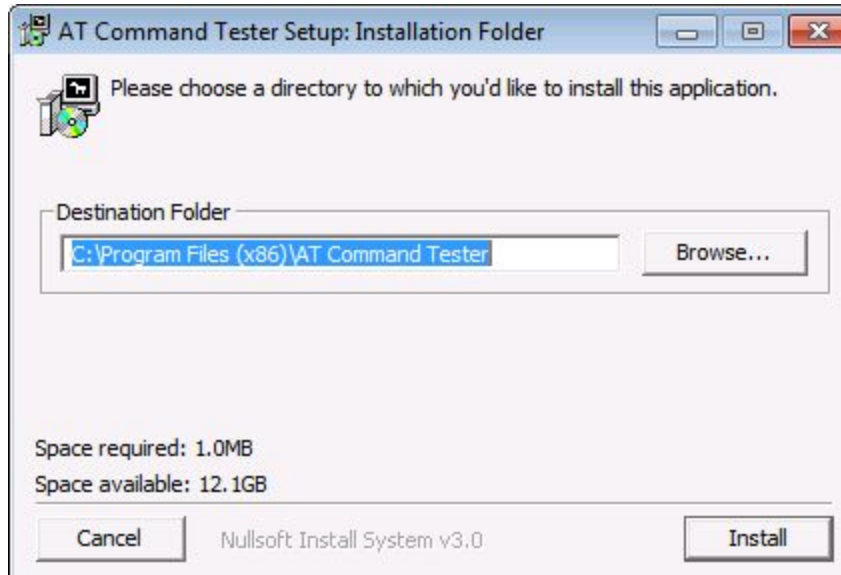
AT CommandTester - Windows Installation Guide

How to install?

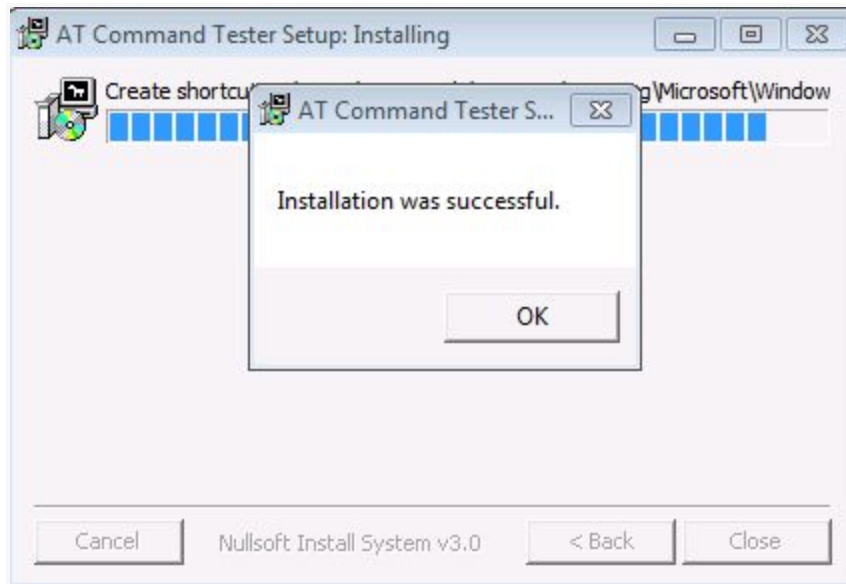
Double-click the setup program



Select installation folder,



Complete installation



How to launch AT Command Tester?

AT Command Tester can be launched in one of 2 ways,

- Doubleclick shortcut "AT Command Tester" created in desktop.
- Start->All Programs->AT Command Tester->Run AT Command Tester

Support Forum

<http://m2msupport.net/m2msupport/forums/forum/at-command-tester/>